

# Product Accessories

## 产品配件

TE通用型精密伺服注塑机 80T-230T

TE general-purpose precision servo-driven injection molding machine 80T-230T



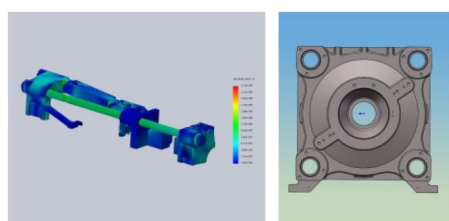
先进的丝杠设计，搭配欧洲专业控制器，使得机器动作稳定、制品良率高、响应速度快、控制精准、操作简单，满足多种工艺需求。

Advanced Ball screws design with European professional controller makes the machine action stable, combined with high product yield, fast response time, precise control, easy operation, and meet a variety of process requirements.



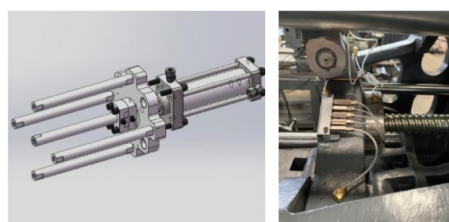
采用斜排双射移油缸及线性导轨，射胶更加精准稳定。

Diagonal double injection mold shift oil cylinder and linear guide, more accurate and stable injection.



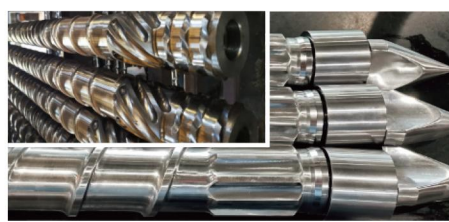
模板优化升级，结构可靠，变形小，能有效保护设备，提高模具使用寿命。

Optimized and upgraded platen, with reliable structure and small deformation, can effectively protect the equipment and improve the service life of mold.



注重客户实际体验，包括工业设计、人机交互等细节优化。

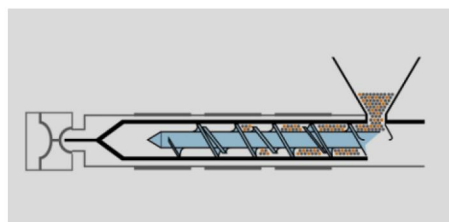
Focus on the actual customer experience, including industrial design, human-machine interaction and other details optimization.



标准螺杆：高性能氮化钢，耐用高效，应用广。

高混色/高混炼螺杆：满足高混色制品，易换色定制螺杆：不同制品特别定制塑化组件，如PC、PA等。

Standard screw: high performance nitride steel, durable and efficient, wide application  
High color mixing/high mixing screw: to meet the high color mixing products, easy to change color custom screw: specially customized plasticizing components for different products, such as PC, PA, etc.



专业的塑化组件搭配，满足不同材料的塑化要求及混色性能。

Professional matching of plasticizing components to meet the plasticizing requirements and color mixing performance of different materials.

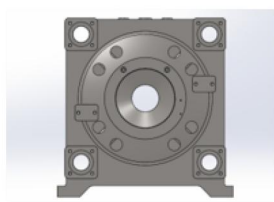
# Product Features

## 产品特点



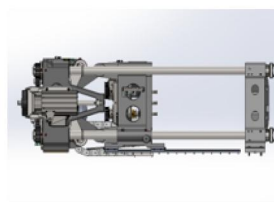
高速响应的伺服电机和高扭矩的滚珠丝杠，保证了机器的国际领先性，开合模控制更精准；

High speed response servo motor and high torque ball screw ensure the machine's international leading, more accurate mode control;



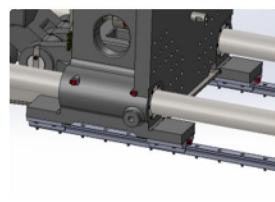
优化的超强模板，受力均衡，适用绝大多数产品；

Optimized super strong platen with balanced force, applicable to most products;



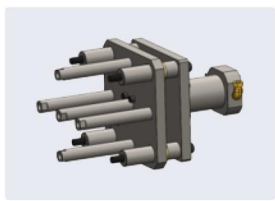
全新斜排机铰布局，可实现超长行程开模，开模位置精度 $\leq 0.02$  mm，模板运动快且稳；

Brand new diagonal hinge layout, which can realize ultra-long stroke mold opening, mold opening Precision of opening position  $\leq 0.02$ mm, fast and stable platen movement;



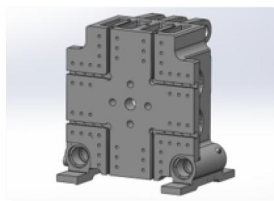
采用双导轨设计，提高模具承载能力；提升模板平行度和定位精度；

Adopt double guide rail design, improve the bearing capacity of the mold; Enhance the parallelism and positioning accuracy of the template;



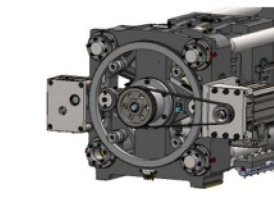
采用欧标顶针，顶针操作空间大；

European standard ejector pin, with large operation space;



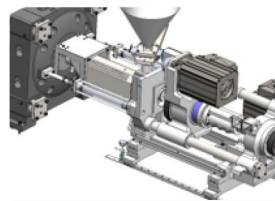
选配T型槽+螺丝固定模板加嵌入式定位圈，装模便捷，组装方便；

Optional T groove + screw fixed template and embedded positioning ring, easy to install mold, easy to assemble;



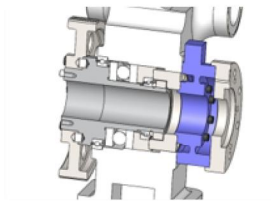
合模伺服电机皮带连接驱动滚珠丝杠；灵活度高，维护简单；

Mold closing servo motor belt connected to drive ball screw; High flexibility, simple maintenance;



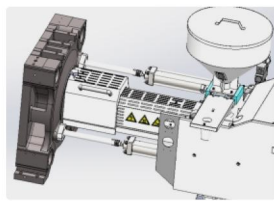
双射移搭配线性导轨，射台运动阻力小，动作灵敏，射胶精准稳定；

Double injection shift with linear guide, low resistance of injection unit movement, sensitive action, accurate and stable injection;



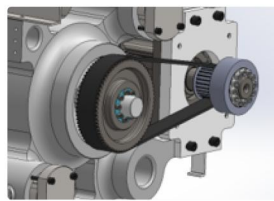
射胶传动轴采用三轴承设计，保证同轴度，螺杆料筒磨损小；

Three bearing design for the injection drive shaft to ensure coaxiality and small wear of the screw barrel;



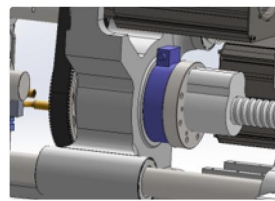
全新射台，整体框架式底座，护罩设计美观，安全稳定；

New injection unit, overall frame type base, beautiful design of shield, safe and stable;



全伺服系统设计，高效稳定，运行平稳且噪音小、易于维护；

Full servo system design, high efficiency and stability, smooth operation and low noise, easy maintenance;



采用高精度压力传感器，具有优越的压力闭环回路运算控制；

Adopt high precision pressure sensor, with superior pressure closed-loop operation control;



采用高端进口注塑机专业电脑控制器。

High-end injection molding machine professional computer controller.